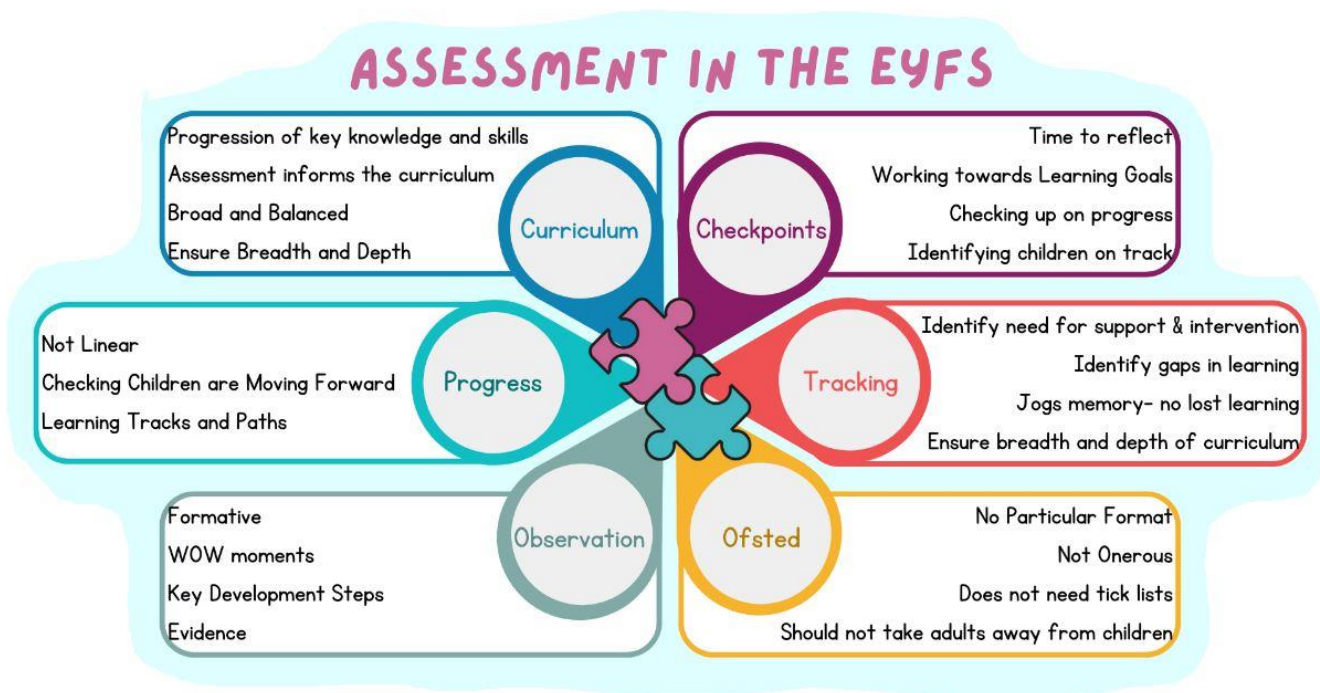


## Assessment in the Early Years Foundation Stage



## What is Assessment?

All assessment in the EYFS falls into two categories, **formative** and **summative**.

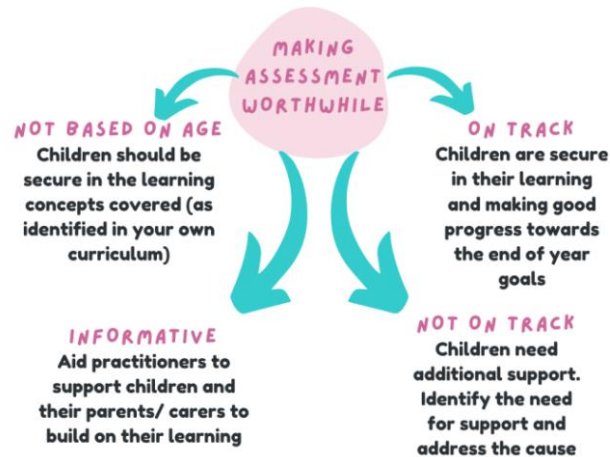
**Formative Assessment:** Arguably the most important type of assessment. Often referred to as “Assessment for Learning”. This informs your teaching and enables you to ensure learning progression.

**Summative Assessment:** An “Assessment of Learning”. This creates data, giving a snapshot measure of progress against set learning goals.

Assessment should be...

- Gathering information to understand learners and their needs
- A snapshot of where children are on their own knowledge and skills continuum
- A way of ensuring our curriculum meets the needs of our current cohort of children
- A way of identifying children in need of extra support
- In the simplest form assessment allows us to measure the impact of curriculum intent and implementation for our learners

## Assessment in the Early Years Foundation Stage



## How do we carry out Assessment in the EYFS?

The key to formative assessment in the EYFS is observation and interaction because it allows us to develop an understanding of the whole child and ensure that they are moving effectively throughout the curriculum progress model. Whilst we understand that progress is not linear, carrying out observations enables us to reflect on children's achievements towards the learning goals. We also carry out your own Baseline Assessment, through observation and interaction so that we can identify children's starting points.

